

CERTIFIED LAND CORNER RECORDATION

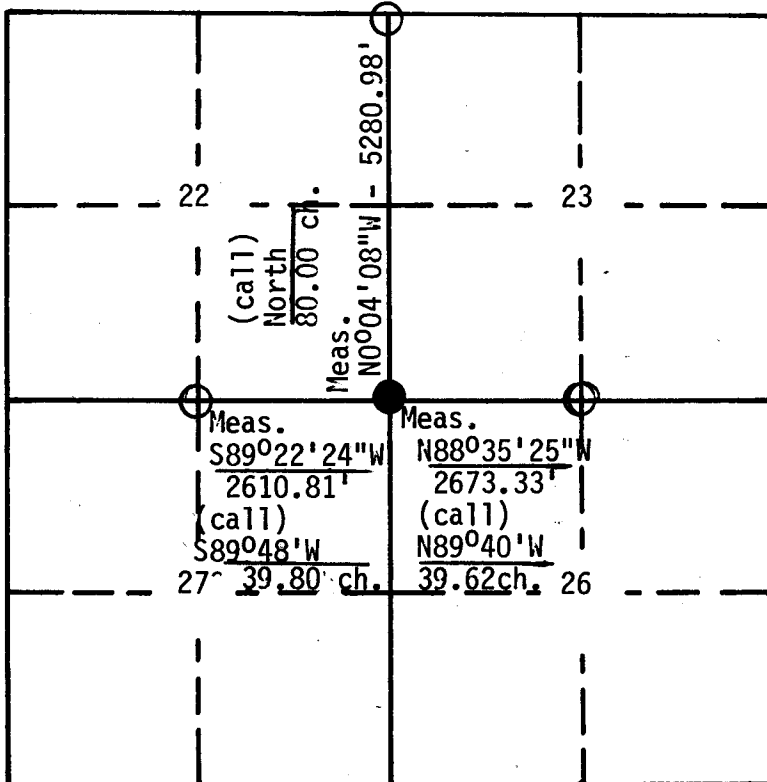
DESCRIPTION OF CORNER EVIDENCE FOUND, AND ORIGINAL RECORD (if known)

Record: Set a limestone 24x12x6 for corner to sections 22, 23, 26 and 27.

DESCRIPTION OF MONUMENT AND ACCESSORIES ESTABLISHED TO PERPETUATE THE ORIGINAL LOCATION OF THIS CORNER:

Found: Set limestone 13" x 4", 10" above ground with no visible markings. An east - west fence line is located 40' - south.
Set: A red metal post 5.0' West.

SKETCH, WITH COURSE AND DISTANCE TO ADJACENT CORNER IF DETERMINED IN THIS SURVEY.
(May Sketch or Paste Reproduction on Reverse Side.)



Section 23 T: 17N R: 66W

- corner filed--this form
- controlling corner

DETAILS

Basis of bearings were established from the record bearing between the Northwest and North ¼ section corners of Section 27, T17N R66W.

Surveyed: October 24, 1983

Job # 83105.000

I, Randall J. Rowley certify that I have carefully performed or reviewed the work done on the diagrammed corner as reported on this recordation form and approve the same.

Sherril R. ...

Randall J. Rowley 3888
Signature of Surveyor Registration No.

STATE OF WYOMING,
Office of Clerk and Recorder,
County of Laramie

725444

This "corner record" was filed for record on the DEC 9 1983 day of 1983, 1983, was noted on the cross-index plat and is assigned page No. , in book No. .

Janet C. Whitehead
County Official

Cross Index No. _____	T. _____	R. _____	Mer. _____
_____	T. _____	R. _____	Mer. _____
_____	T. _____	R. _____	Mer. _____
_____	T. _____	R. _____	Mer. _____
_____	T. _____	R. _____	Mer. _____
_____	T. _____	R. _____	Mer. _____
_____	T. _____	R. _____	Mer. _____

R-17